



La Ferme!

## Technical Rider “La Grange” Season 2020-2021

### **Artists acces :**

Scavée du Biéreau 3 1348 Louvain la Neuve

Acces plan on demand

### **Virtual visit :**

<http://vv.satrabel.be/fermedubiereau/>

### **Contact :**

Technical manager:

Loïc de Radiguès

loic@laferme.be

+32(0)493/674710

### **Venue configuration :**

392 sitting place

512 standing up place

392 place mix up on the front, sit on the back

300 place for walking diner

### **Scène :**

The scenic space is quite special we have two columns that structure it.

Feel free to watch the 3D tour and contact us for a shot of the scene.

Width : 10m.

Width between the columns : 5,3m

Deth: 6m

Height : 1m

Clearance : 5,5m

### **Machinerie :**

8 mobile 200KG pipes equipped with 3 split electrical circuits (in P17 CEE16) and patchable as well as a direct 240V circuit and two dmx lines.

Different fixed pipes are placed in the room, these are indicated on the plan in the appendix.

2 mobile proscenium platforms are 1500Kg electric hoists

N.B: the pipe 8 is equipped with the sound system, its lighting load is impossible.

**Sound :**

It is imperative to respect the maximum sound level = 100 dB (A) leq 15min at the table.

The organization reserves the right to reduce the noise level, if it is exceeded (please see the charter on noise level).

**FOH :**

PA:

Line array D&B Q1

4 x Q1 on each side top

6 x Qsub on the floor

1 x B2 on the floor

Front-Fields : 2 x L Acoustic MTD 108

Out-Fields : 2 x L Acoustic MTD 108

Délais : 2 x L Acoustic MTD 108xt at 12m of the stage

Desk FOH :

Yamaha CL5 + Rio 3224

**MON :**

Wedges :

10 x D&B Max 15

8 channels

Console MON :

Only on demand

Micro list :

DYNAMIC		Quantité
Shure	B 52A	1
Audix	D6	1
Shure	SM 57	4
Shure	B 57A	5
Shure	SM 58	5
Shure	B 58A	5

Sennheiser	e906	2
Sennheiser	e905	2
Sennheiser	MD421	1
Electrovoice	RE20	1

STATIC			Quantité
	Shure	KMS 137	8
	Shure	B 98	4
	Shure	B 91	4
	Neumann	KMS 105	1
	AKG	C214	2
	DPA	4099	2
	Accessoires DPA 4099	Piano	2
		Violon	2
		Violoncelle	1
		Contrebasse	1
		Guitare	1

DI			Quantité
	BSS	AR-133	6
	Work	DAC 111	4
	LA Audio	D12	4

Balancing transformers			
	LA Audio	DBT Plus	1

We don't allow any HF system that weren't planned or ratified by us.

The use of HF frequencies that aren't validated by us are on the tenant's responsibility.

Under no circumstances the responsibility of the La Ferme or their technicians will not be taken into account concerning the use of the device from which the frequencies are not statutory towards the IBPT and the frequencies allowed in Belgium.

Backline:

If exception or previous negotiation, the festival doesn't provide ANY backline or accessories (neither guitar foot, nor drum-player's chair, etc.)

The venue have a piano Yamaha C7 only on demand.



## Sound level charter

As a preventive measure, “La Ferme du Biéreau” imposes a maximum sound level limit to which public and artists are exposed.

“La Ferme du Biéreau” plans two configurations :

**- Seated public:**

Sound level will not exceed **98 dBA is leq 15min.**

**- Standing public:**

Sound level will not exceed **100 dBA is leq 15 min.**

Sound level is measured with a system *10eazy Classe 2*.

It's a calibrated system known for its reliability. It meets all specifications of CEI 61672-1 standard.

Sound level will be permanently displayed at FOH desk and visible by technicians and public.

Perception of sound levels and tolerance to high sound levels are subjective. We encourage all organizers to have adequate and sufficient hearing protection for the public (earplugs, child protection helmets, ...).

When the production accept the technical condition of the venue, she accepts the level charte and are committed to scrupulously respecting it.

## **Light:**

The light plot are the same for every band because we are in configuration festival. We can't adapt them for each band.

You will find the light plot in end of this rider.

List of light equipment:

### Traditional lights :

10 x Fresnels ADB F101 1kW

10 x PC ADB C101 1kW

8 x PAR 64 THOMAS CP62 ou CP60

2 x FL1300

### Moving lights:

8 x Clay Paky Alpha Spot HPE 300

4 x Robe Color Wash 250AT

16 x Rush MH6

### Effects:

7 x Showtec Sunstrip T10

1 x Martin Atomic 3000

### Lighting desk:

1 x Avolites Arena

1 x ADB Cantor

4 lignes DMX reliant la scène à la régie en salle

### Dimmer :

ADB 24 canaux 10A

### Accessoires :

6 x pied ADB TTP2 1,25m > 2m. 10kg max.

### Hazer :

2 x Unique

### Power:

1 prise 63A 400V sur scène lointain cour (dont 32A redistribué sur les perches de 1 à 5).

**Vidéo: (only on demand)**Projecteur:

1 x Barco RLS-W12 12000 lumens

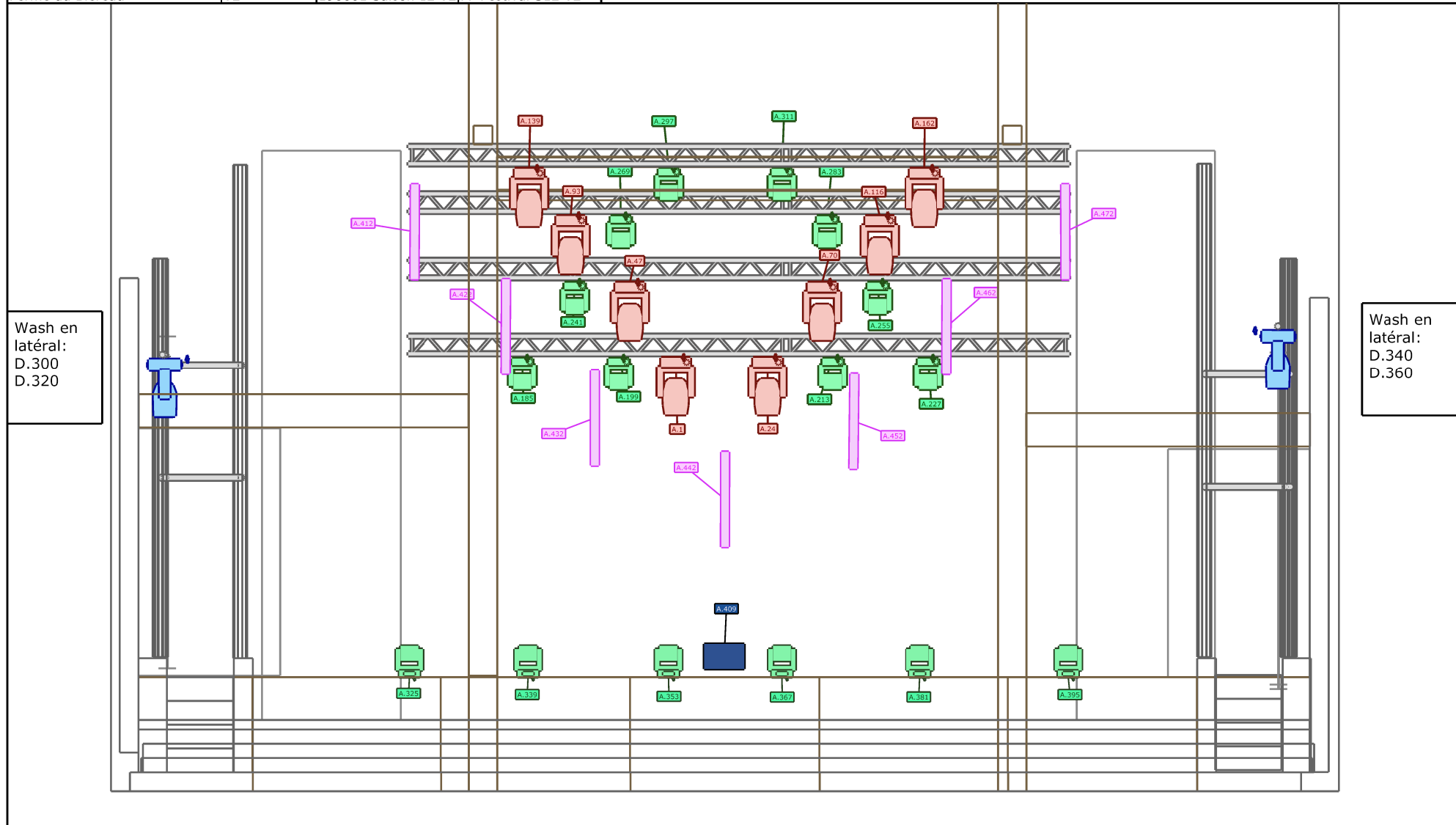
Ecran :

Front screen only, for more detail please contact us.

**Security rules & special effects:**

The use of fire or open flame is strictly prohibited at the Ferme du Biéreau even as part of a staging. By extension, fire-based special effects are prohibited (firecrackers, fireworks ...). Glitter, confetti, paint bombs and other such effects are also strictly prohibited.

Plan de Feu Festival S12			
Site du projet	2019-2020		
Nom de client			
Créé par	Nombre de version	Nom de fichier	Intitulé du document
Ferme du Biéreau	V2	190601 Saison 12 V2	PF Festival S12 V2



## Symbol key



Clay Paky - Alpha Spot  
HPE 300 -Standard Rain



Sunstrip T10 Active  
Mode 4 10ch



Robe - Color Wash  
250AT - Mode 3

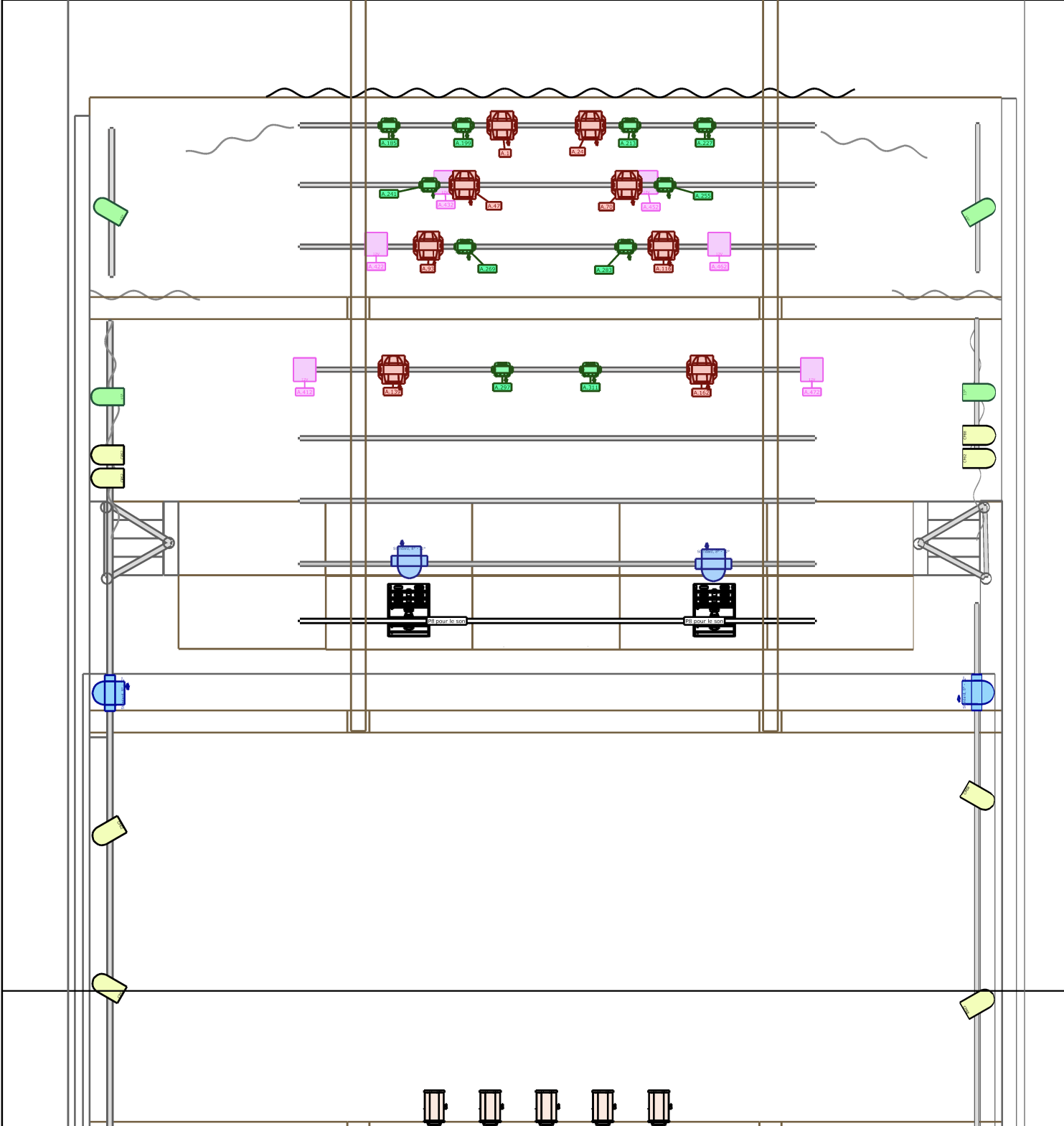


Rush MH6 Wash 14  
canaux - standard



Atomic 3000 Mode 3

Projet <b>Plan de Feu Festival S12</b>			
Lieu du projet <b>Ferme du Biéreau</b>		Date du projet <b>2019-2020</b>	
Nom du client			
Dessiné par <b>Ferme du Biéreau</b>		Nombre de version <b>V2</b>	nom du fichier <b>190601 Saison 12 V2 - Origin</b>
		En-tête du document	



## Symbol key

	PAR 64 CP62		ADB - C101
	Rush MH6 Wash 14 canaux - standard		Robe - Color Wash 250AT - Mode 3
	Clay paky - Alpha Spot HPE 300 -Standard		
	Sunstrip T10 Active Mode 4 10 ch		

## Ligne 1:

Clay Paky Alpha Spot HPE 300: 1 à 184  
Rush MH6 Wash Standard: 185 à 408  
Atomic: 409  
T10: 412 à 481  
Hazer: 500 à 502

## Ligne 4:

Trad: 1 à 24  
Robe Color Wash 101 à 161  
Briteq Stage Beamer Arc1s 1/11/21/31  
Planospot: 446 à 506